



ANTI -COVID 19

HEALTH PLAN

VILLARS SKI SCHOOL
DIABLERETS PURE TRACE
SKI SCHOOL ALLIANCE
VILLARS SKI RENTAL

Table of contents

1. Base.....	2
2. Target	Erreur ! Signet non défini.
3. Staff.....	2
4. Hygiene, cleaning and disinfection	3
5. Waiting lines (ticket desks, start of lessons and ski lifts).....	3
6. Annex spaces (instructors room, WC, ski-room ...).....	4
7. Teaching.....	Erreur ! Signet non défini.
8. Meeting points.....	Erreur ! Signet non défini.
9. Related documents.....	Erreur ! Signet non défini.



1. Base

- Health plan of Swiss ski lifts
- Swiss Snow Sport health plan
- SSBS Health plan
- OFSP behaviour guidelines
- Federal Ordinance on measures destined to fight COVID-19 pandemic in a particular situation
- Appliance of Federal Ordinance on measures destined to fight COVID-19 pandemic in a particular situation from the Conseil d'Etat.

2. Target

The «Covid-19» health plan's purpose is to protect hosts, workers and third parties. It is based on many documents mentionned above in point 1.

A good coordination is necessary between the ski lift companies and the local authorities in order to apply the health plan against COVID – 19.

Persons who have Covid-19 or Covid-19 symptoms cannot be admitted on the ski resort ; arrangements must be made for this purpose such as the obligation of self-declaration for visitors, or the staff can refuse access to people with obvious symptoms of the disease.

3. Personnel

The health plan of the company must ensure the respect of all guidelines mentionned above. Adapted measures must be planned for all guidelines. The employers and the managers of the company must apply these measures.

Management :

- Specific aspects of the work and of professionnal situations are taken into consideration in order to ensure protection.
- Management is responsable of informing staff and other persons concerned of the measures taken.
- The body temperature of the entire staff, with traceability and on a daily basis, must be taken before they begin work.

Staff :

- All staff and other persons must keep a distance of 1.5 metres from each other. Wearing a face mask is compulsory, inside and outside the premises.
- Indoor spaces must regularly be aired.
- All staff must regularly wash their hands with soap and water, or with hydroalcoholic solution, especially when they arrive at work, each time they serve a client and before and after their breaks. When this is not possible, hands must be disinfected.
- Mugs, glasses, plates and ustensils must not be shared ; all kitchen wear must be washed with soap and water after use.



- Surfaces and objects (for ex: desks, keyboards, phones, steering wheels in vehicles) must be cleaned regularly with cleaning products, especially if these are shared by many members of staff.

Sanitary regulations

- Vulnerable persons benefit from adequate protection. They are informed of their rights and health measures taken within the company.
- Any staff that are vulnerable but without symptoms, must be hired to do work that does not involve direct contact with the public.
- What to do in case of compatible with COVID -19 symptoms : make a Coronacheck and follow it's insructions :
 - Take a test straight away ;
 - Stay at home and do not come into contact with others until the result is available. If the result is negative, you can continue to work as normal, as stated in the health plan of the confédération ;If the result is positive, self isolate, follow instructions of the local authorities and immediately inform your employer.

4. Hygiene, cleaning and disinfection

- Hand cleaning points must be put in place : clients must be able to wash their hands with soap and water or with a disinfectant when they enter the building.
- Remove useless objects which could be unnecessarily touched by clients.
- Remove all water dispensers.
- Clean thoroughly and regularly all surfaces and objects after their use, particulalry if many persons touch them. Make sure litter is removed.
- Make sure enough fresh and clean air goes through work and public spaces.
- Regularly clean door handles, elevator buttons, staircase railings and any other objects touched by many people.

5. Waiting lines (ticket desks, start of lessons and ski lifts)

- Encourage payments by electronic means and no contact paymens.
- Place a glass shield between customers and sales personnel.
- Make sure disinfectant is available and refill the dispensers regularly.
- Regularly disinfect the payment terminals buttons.
- Place visible 1,5m spacing indicators on the floor or place signs (1,5m, 3m, 4,5m, etc.).
- You must wear a face mask as complied with OFSP recommendations in all indoor and outdoor waiting areas.
- Minimize waiting and seating possibilities.
- Clean and disinfect bars and handles regularly.
- Physically and permanently check that these measures are applied.



6. Annex spaces (instructors room, WC, ski-room ...)

- Place posters with all the relevant information in all the rooms, WC etc. Avoid close contact with each other, respect distancing and mask wear.
- Indicate the maximum number of persons allowed in a closed area.
- Place posters and disinfectant dispensers in all entrances (if there is no possibility to wash hands).
- Where it is sensible to do so, place floor indications for distancing or pictograms with the distancing information.
- Indicate closed areas and lock them.
- Wear a face mask as complied with OFSP recommendations in all indoor spaces accessible to the public and in all waiting areas to public transport (indoor and outdoor).

7. Teaching

- Participants commit to taking part in ski lessons with no symptoms. If a sign of symptom appears before the lesson, the participant commits to contacting immediately the person in charge mentioned in the preamble. The participant must then follow OFSP instructions on self isolating. (visit www.bag.admin.ch/isolation-und-quarantaene).
- If any coronavirus symptom shows during the lesson, the participant must contact immediately the person in charge mentioned in the preamble. On the basis of the discussion with the participant, the organizer has the right to send the ill participant home wearing a face mask. The participant must follow OFSP instructions on self isolation. (visit www.bag.admin.ch/isolation-und-quarantaene).
- The participant must follow OFSP instructions (visit www.bag.admin.ch/isolation-und-quarantaene).
- Participants commit to not having any kind of contact between them (hand shake, kiss etc.)
- During the whole lesson, participants keep a 1.5m distance between them. This applies during coffee breaks and lunch breaks. If this measure cannot be applied, face masks must be worn by all participants. In case of accident/emergency, appropriate precautions will be taken (disinfectant, face mask).
- EVERYBODY MUST WEAR A FACE MASK (instructors, staff and pupils) Exceptions : Pupils under 12 don't have to wear a face mask. Persons with special needs or medical reasons which do not allow them to wear a face mask. These include : Face injuries, shortness of breath, serious anxiety due to wearing a mask and handicaps where the use of the face mask is impossible or unreasonable.

8. Meeting points

- Time spent in meeting points must be very brief and must be used only to allocate the groups.
- Parents/accompanying persons bring the children which are taken in charge by the ski instructors. Parents/ accompanying persons must leave immediately. Meeting points for lessons must be clearly indicated and marked.



9. Related documents

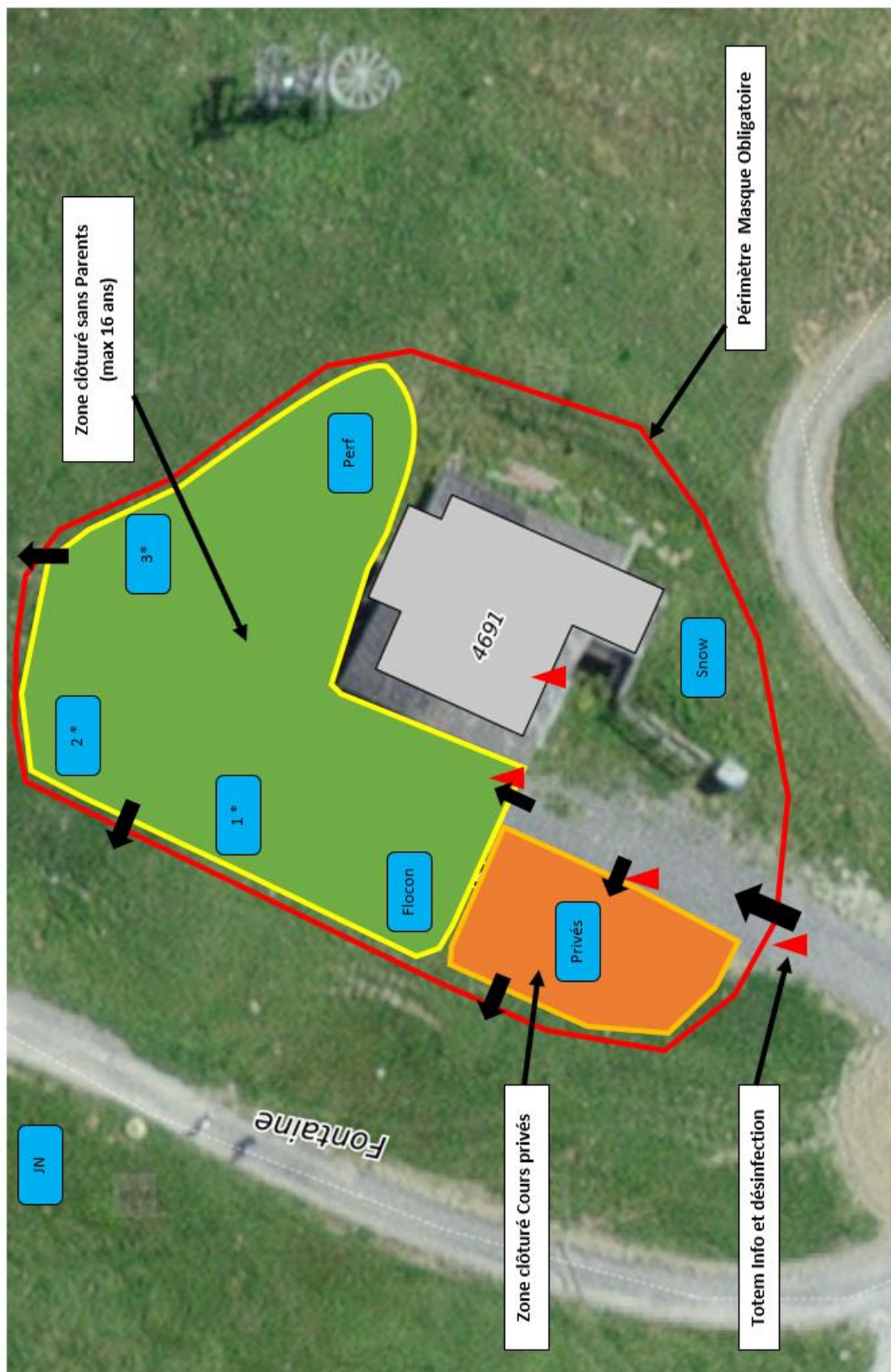
- Daily check list Covid 19 – Daphné site
- Daily check list Covid 19 – Bretaye site
- Premises map Daphné
- Premises map Bretaye
- Premises map Mazots
- Check list Actions to be taken
- Memo staff and ski instructors
- Fact Sheet Covid Angel

All persons must wear a face mask that complies with OFSP recommendations in indoor spaces accessible to the public and in all waiting areas and access areas to means of transport (outside and inside).

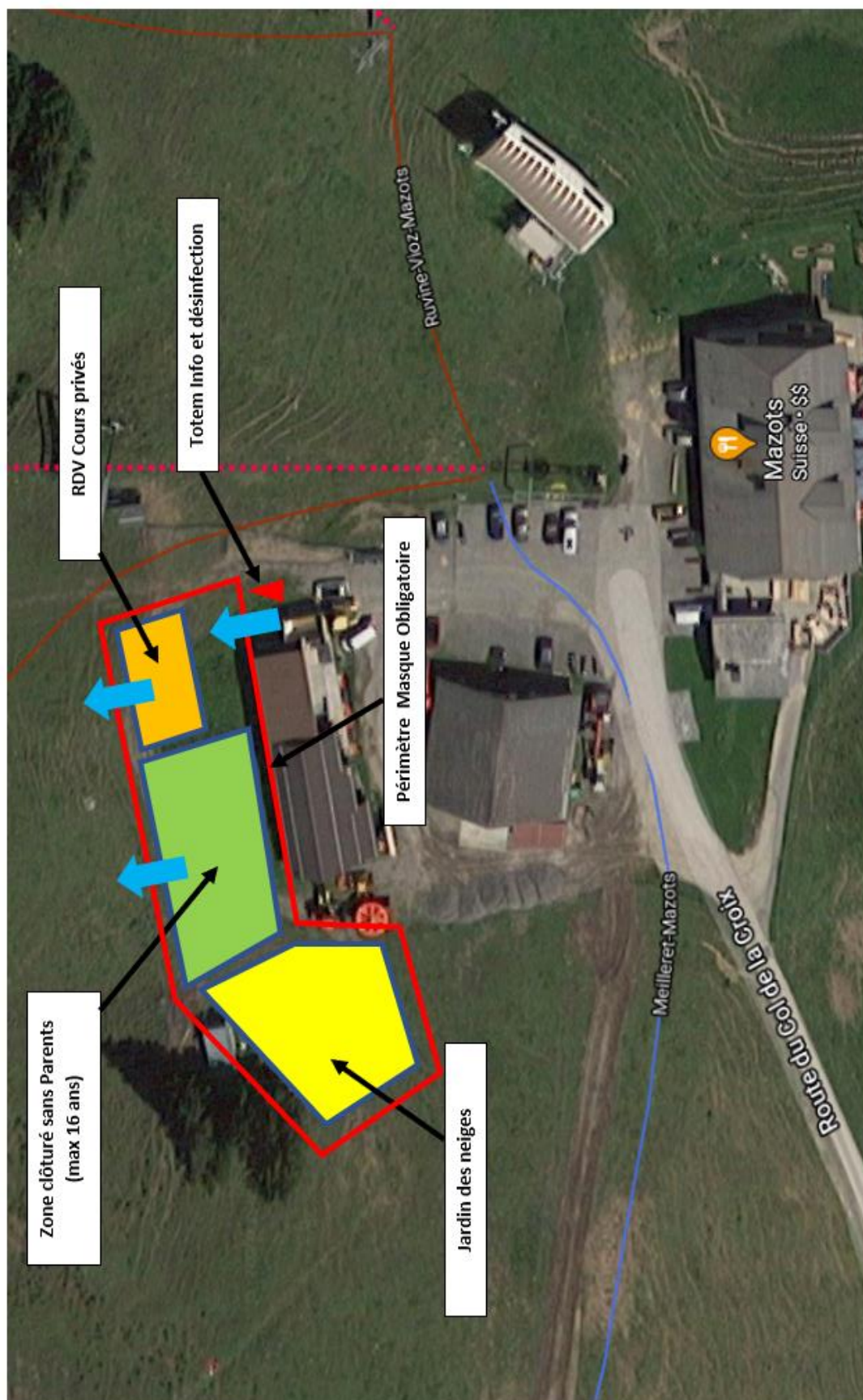
Person in charge (1): Deburaux Martin 076 596 08 04

Person in charge (2): Kronauer Roxane 079 455 48 10

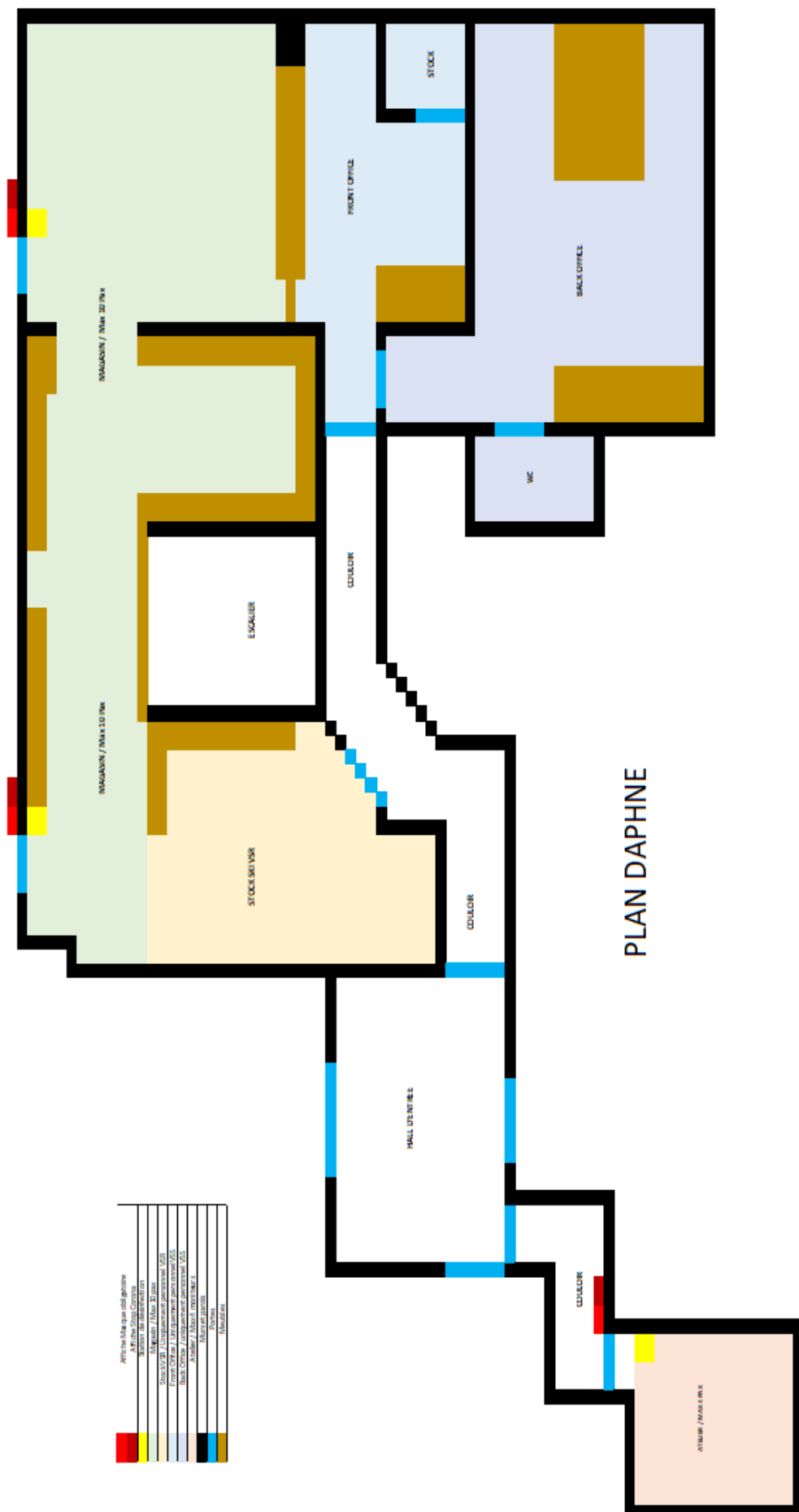
Person in charge (3): Dégallier Luc 078 718 11 36



PLAN COVID - BREPAYE



PLAN COVID – LES MAZOTS





Fiche de contrôle journalière - COVID 19 - Bretaye								
Date								
Responsable site Bretaye du jour								
Actions et contrôles	Désinfection générale			Toilettes			Bureau / Espace moniteur	
	Contrôle remplissage station de désinfection et distributeur de savon	Désinfection poignées et rampes	Aération des locaux de consommation pendant 10 minutes	Vider les poubelles des toilettes	Nettoyage des toilettes	Désinfection des poignées et robinets des toilettes	Désinfection ordinateur, téléphone et surface bureau	Désinfection des surfaces du local moniteurs
08h								
10h								
12h								
14h								
16h								
18h								
20h								

Fiche de contrôle journalière - COVID 19 - Daphné								
Date								
Responsable site Daphné du jour								
Actions et contrôles	Désinfection générale			Toilettes			Bureau	
	Contrôle remplissage station de désinfection et distributeur de savon	Désinfection poignées et rampes	Aération des locaux de consommation pendant 10 minutes	Vider les poubelles des toilettes	Nettoyage des toilettes	Désinfection des poignées et robinets des toilettes	Désinfection ordinateur, téléphone et surface bureau	Désinfection des surfaces du magasin
08h								
10h								
12h								
14h								
16h								
18h								
20h								



Le domaine skiable Télè Villars-Gryon-Les Diablerets ouvrira ses portes le samedi 19 décembre ! INFOS COVID



HIVER

ÉTÉ

GROUPES

L'ÉCOLE

CONTACT

LOCATION SKI

RÉSERVATION



INFOS COVID



Afin de préparer votre venue à Villars, vous trouverez sur cette page les informations principales en relation avec votre protection contre le COVID 19. Nous appliquons les directives et recommandations de l'état de Vaud, de la confédération ainsi que celles des associations professionnels.

INFOS COVID DE L'ÉTAT DE VAUD

INFOS COVID DE LA CONFÉDÉRATION (OFSP)

Les règles COVID à l'école de ski et sur le domaine skiable

